

Association of Muslim Schools UK

NPQH Subsidy Scheme Guidelines

2012/2013



Contents

1.0 Introduction to NPQH Subsidy Scheme

2.0 Can I apply?

3.0 Amount of support

4.0 How do I apply?

5.0 How will my application be assessed?

6.0 How will the subsidy be paid?

7.0 NPQH subsidy timeline

**Appendix 1: Evidence of supporting AMS
Vision, Mission & Values**

1.0 Introduction to AMS's NPQH Subsidy Scheme

All praise is due to Allah, Lord of the worlds. Peace and prayers be upon the Prophet Muhammad, his family, his Companions and all those who follow in their footsteps until the Last Day. To proceed:

In order to improve the management of schools and equip school leaders with the necessary operational and strategic skills, the National Professional Qualification for Headship (NPQH) is offered by the National College for School Leadership (NCSL) to both existing and aspiring headteachers. Designed in collaboration with some of the country's leading headteachers and academics, NPQH develops talented leaders from all backgrounds who can deliver educational excellence in a self-improving system and high quality outcomes for pupils and students.

From September 2012, the redesigned NPQH programme will follow a modular curriculum based on Master's level criteria and focus on developing the knowledge, skills and attributes of a successful headteacher. To achieve the NPQH qualification participants will need to successfully complete three essential and two elective modules involving extended case studies and related in-school assignments with a stronger focus on leading teaching, behaviour and performance management. Participants will also be required to complete a placement of a minimum of nine days at another school. The anticipated duration of the course is 6 – 18 months.

As part of AMS's commitment to supporting and developing excellence in Muslim schools, AMS has been successfully supporting both existing and aspiring headteachers by extensively contributing towards the cost of the programme. It is with great pleasure therefore that AMS can confirm the greatly appreciated financial support of the International Islamic Charitable Organisation (Kuwait), through which AMS can continue to contribute towards the cost of the NPQH over the academic year 2012-2013 by contributing 75% (per candidate) towards the cost of the programme.

Whether you are an existing headteacher of a Muslim school or an experienced school leader wishing to progress to headship, the guidance provided within this document will enable you to understand the structure of AMS's NPQH Subsidy Scheme application process in order to make the relevant considerations when submitting an application for the Scheme.

In addition to the guidance provided within this document, interested candidates are strongly advised to review the comprehensive information relating to the NPQH by visiting:

<http://www.nationalcollege.org.uk/index/professional-development/npqh.htm>

Should you require further information about AMS's NPQH Subsidy Scheme, please feel free to contact AMS by sending an email to: npqh@ams-uk.org

On behalf of AMS, we pray that Allah subhanuatallah grants you success in your quest to achieve academic excellence. Ameen.

Kind regards,

The AMS Schools' Committee

2.0 Can I apply?

As a registered charity committed to supporting and developing excellence in Muslim schools, AMS has a duty to ensure the correct distribution of its funds in accordance with its Vision, Mission and Values. To this effect, all applicants to the NPQH Subsidy Scheme will be required to demonstrate they meet the AMS selection criteria as follows:

- Acceptance by the National College for School Leadership (NCSL) on to the NPQH programme
- Proven senior leadership experience gained from leading and developing AMS member schools for at least 12 months prior to application to the NPQH Subsidy Scheme;
- Fully-paid AMS subscription
- Demonstrable evidence of supporting the AMS Vision, Mission and Values (see appendix 1)

3.0 Amount of support:

Initial assessment:

The initial cost of assessment for acceptance on the NPQH programme will be met by the National College for School Leadership (excluding travel/hotel/subsistence costs which must be met by the participant).

Cost of NPQH after acceptance on to the programme:

AMS will contribute 75% towards the full cost of the NPQH programme which for the academic year 2012-2013.

Participants or their sponsoring schools will be required to meet the remaining 25% of the cost of the programme.

Costs for travel/hotel/subsistence will have to be met by participants at every stage of the NPQH programme.

In the event a participant chooses to withdraw from the NPQH programme:

1) AMS reserves the right to withdraw all funding support from the participant.

2) Providing a participant has not yet completed their placement, there will be no charge to withdraw from the programme.

3) If a participant chooses to withdraw from the programme **after** completing their placement, they will be required to meet the cost of withdrawal **themselves** which currently stands at £760.

4.0 How do I apply?

4.1 Applications for the NPQH programme must be made directly to the National College of School Leaders (NCSL) as follows:

- Stage one: an online application form with endorsement from your line manager (or sponsor if you have one)
- Stage two: one-day assessment (at a venue designated by the NCSL)

The NCSL's on-line application form can only be accessed through the following link on the NCSL's website:

<http://www.nationalcollege.org.uk/index/professional-development/npqh/npqh-apply.htm>

4.2 Applications for AMS's NPQH Subsidy Scheme must be made directly to AMS using the application form in appendix 1 of this document.

Please note applications for AMS's NPQH Subsidy Scheme must be made at the same time an application is made to the NCSL for acceptance on to the NPQH programme. A copy of the NPQH application must be attached to the AMS NPQH Subsidy Scheme application.

A clear timeline for applications can be found in section 7.0 of this document.

5.0 How will my application be assessed?

5.1 All applications for acceptance on the NPQH programme will be assessed by the NCSL in conjunction with the application guidance that can be found on their website:

<http://www.nationalcollege.org.uk/index/professional-development/npqh/npqh-apply.htm>

Please note AMS does not partake in any stage of the NCSL's assessment process.

5.2 Applications for AMS's NPQH Subsidy Scheme will be assessed by the AMS Schools' Committee through the careful cross-referencing of:

- 1) Completed AMS NPQH Subsidy Scheme application forms (see appendix 1) with
- 2) AMS's Vision, Mission & Value Statements which consist of:

- Developing high levels of taqwa and ihsan;
- Developing love and pursuit of the Qur'an and the Sunnah;
- Developing a love of learning through the pursuit of academic excellence;
- Demonstrating effective leadership capacity;
- Enabling self and others to fulfil their potential;
- Contributing positively to own well-being and that of own/others' families, communities, society and the environment.

6.0 How will the subsidy be paid?

Upon acceptance by

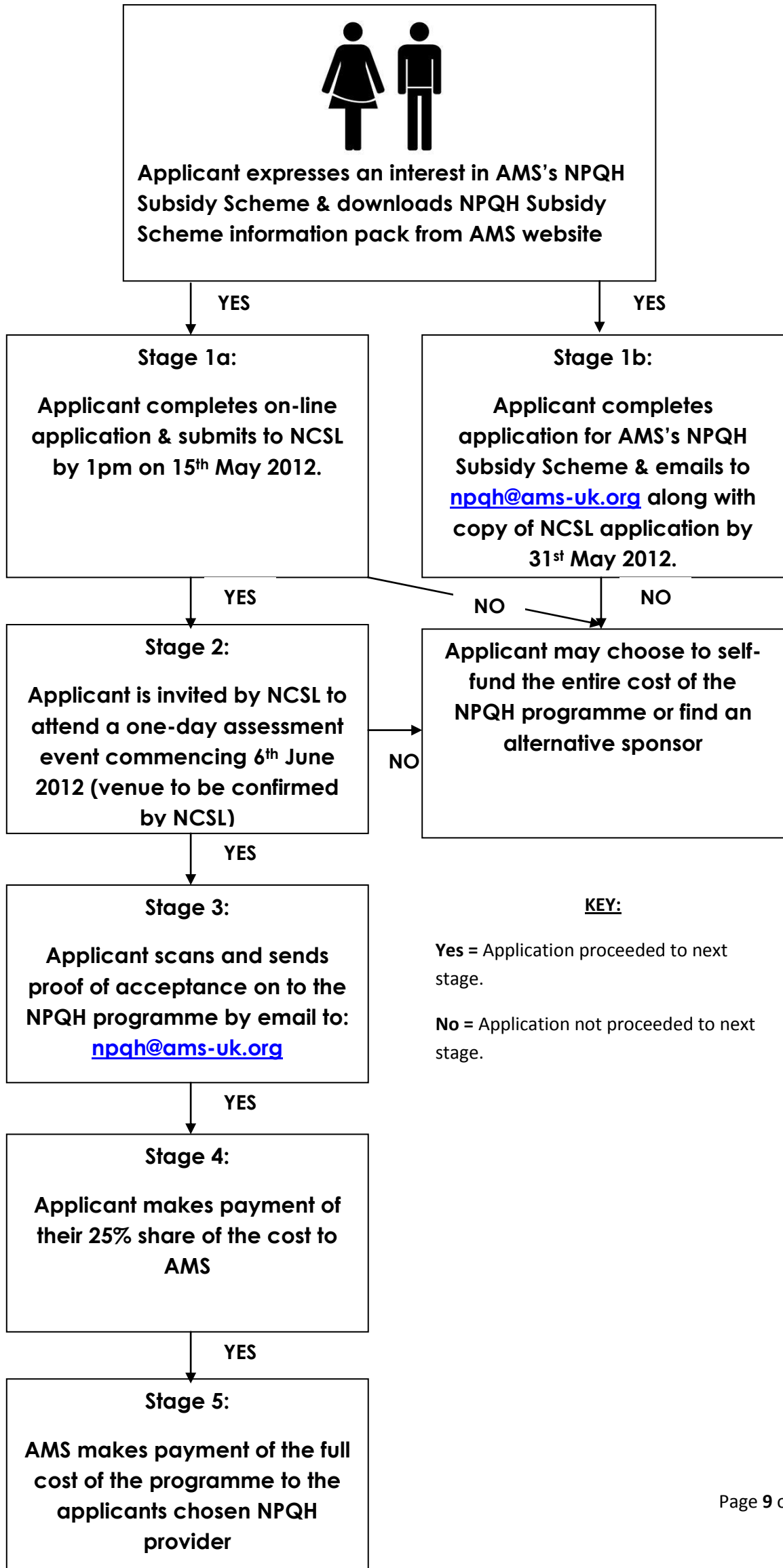
- NCSL onto the NPQH programme, and
- AMS onto the NPQH Subsidy Scheme

AMS will:

- 1) take payment of the participant's share of the NPQH fee **from the participant** and
- 2) pay this along with the AMS NPQH Subsidy **directly to the NPQH provider**.

At no stage will payments be made directly to the participant.

7.0 NPQH Subsidy Scheme timeline



Appendix 1: Evidence of supporting AMS Vision, Mission & Values

NPQH Subsidy Scheme – Supporting Application

Title:	First name:	Surname:
House no/street name:		
2nd line of address:		
Town/City:		Postcode:
Home phone number:		
Mobile phone number:		
Email address:		
Name, address & telephone number of school/organisation:	Name of school/organisation: Address: Telephone number:	

Have you submitted your NPQH application to the NCSL? (tick as appropriate)

- YES, my application has been accepted
(attach a copy of your NPQH application **WITH** proof of acceptance)
- YES, but I am still waiting for confirmation of a place from the NCSL
(attach a copy of your NPQH application)
- NO I am in the process of submitting my application
(You cannot submit your application to AMS's NPQH Subsidy Scheme unless it is accompanied with a copy of your NPQH application to the NCSL)

Please state your role/position at the school/organisation where you work:		
Has your school/organisation been a member of AMS for at least 12 months?	YES	NO
If so, provide your school/organisation's AMS membership number.	AMS membership no:	

In order to support your application to AMS's NPQH Subsidy Scheme, please provide a written account of specific examples from the last 12 months, of how your senior leadership experience has supported AMS's Vision, Mission & Values:

- Developing high levels of taqwa and ihsan;
- Developing love and pursuit of the Qur'an and the Sunnah;
- Developing a love of learning through the pursuit of academic excellence;
- Demonstrating effective leadership capacity;
- Enabling self and others to fulfil their potential;
- Contributing positively to own well-being and that of own/others' families, communities, society and the environment.

Your account should be **no more than 400 words**.

Declaration:

I understand that my acceptance to AMS's NPQH Subsidy Scheme is subject to:

- Acceptance by the National College for School Leadership (NCSL) on to the NPQH programme
- Proven senior leadership experience gained from leading and developing AMS member schools for at least 12 months prior to application to the NPQH Subsidy Scheme;
- Fully-paid AMS subscription
- Demonstrable evidence of supporting the AMS Vision, Mission and Values

I also understand that in the event I decide to withdraw from the NPQH:

- AMS will withdraw its support from the NPQH Subsidy Scheme.
- If I withdraw after completing my NPQH placement, I will be required to pay AMS the sum of £760.

Applicant's signature: _____

Date: _____

FOR OFFICE USE ONLY:

Has the applicant attached a copy of their NPQH application to the NCSL?	YES	NO
Has the applicant been successful in securing a place on the NPQH programme?	YES	NO
Has the applicant provided <u>specific examples from the last 12 months</u> , of how their senior leadership experience has supported AMS's Vision, Mission & Values?	YES	NO
Has the applicant's school/organisation been a fully paid member of AMS for at least the last 12 months?	YES	NO
Does the applicant fulfil the criteria in order to be shortlisted for AMS's NPQH Subsidy Scheme?	YES	NO
Application reviewed on behalf of AMS by:		